

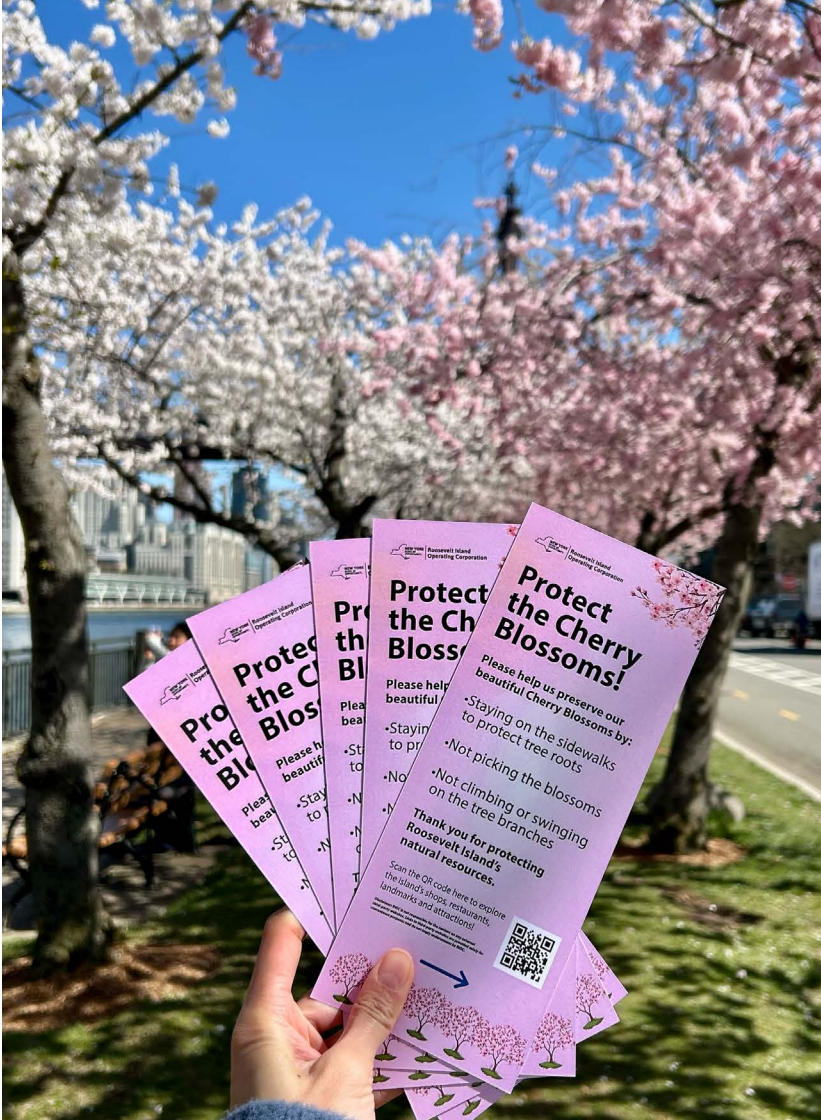


RIOC News

Volume 9, Issue 3: April 2026

IN THIS ISSUE

Letter from the President & CEO	02
Important Event	02
Employee Spotlight	03
Updates from RIOC	04
Youth Center Highlights	12



At RIOC's All-Hands Meeting, we celebrated the winter warriors and the staff who kept operations going through the winter blizzard.

Letter from the President & CEO

Letter from the President & CEO

Dear Roosevelt Islanders:

Spring is a busy time of year on Roosevelt Island, and I want to start by highlighting some of the work RIOC has been focused on across the Island. In this issue, you'll read about several key efforts underway, including our pothole repair initiative, "Operation Smooth Ride," which has already addressed over 150 potholes, the installation of a new retaining wall at Blackwell Playground, and our ongoing AVAC "When in doubt, leave it out!" public awareness campaign. We are also beginning the process of repairing the roof at Blackwell House and continuing to assess additional capital project needs across the Island. Public safety remains a top priority, and I'm proud to share that we have had just six index crimes so far this year—fewer than at this time in 2025—thanks to the continued diligence of our PSD team.

We're also encouraged by the strong community participation in this year's "Petal Protectors" program, with 26 volunteers already signed up to cover 37 shifts. These vigilant volunteers play an important role in helping care for our Cherry Blossoms, while encouraging visitors to explore all of the Island, visit our many historic landmarks, and support our local

small businesses. We're grateful for their continued involvement.

With the blooming of our famous Cherry Blossoms coinciding with spring break and bringing increased foot traffic, RIOC has taken preparations for this season seriously, adjusting our operations to help keep the island clean, safe, and welcoming for residents and visitors alike. PSD is especially active during this time, as they also assist with monitoring and managing conditions at the Tram. This can be a difficult job, particularly during periods of heavy crowds and service disruptions, so I encourage everyone to show our officers patience and grace as they work to keep things moving safely and efficiently.

We know the importance of consistent Tram operations, particularly during this time of year. We also understand that missing the mark when Tram travel is at its heaviest can be a tremendous disruption for thousands of Islanders. Unfortunately, we experienced one such disruption on April 6, when our Tram operator, Leitner-Poma, discovered a faulty sheave on the North cabin during routine maintenance. While the incident underscored the importance of

regular inspections, it also resulted in a nearly three-hour period of rush hour service with only one cabin in operation. Although unexpected outages can occur in any transit system, I have directed our teams to conduct a thorough review of this incident and identify ways to proactively prevent similar disruptions in the future. Long commutes aren't pleasant, particularly when they are made longer by service disruptions during one of our busiest times of year.

I also want to make sure the community is aware of an upcoming opportunity to learn more about the demolition of the Steam Plant, a City-led project. A public townhall will be held on April 15 at 6:00 PM at Good Shepherd Chapel, hosted by HPD, DOB, and other governmental partners working on the project. This will be an opportunity for residents to hear directly from the agencies overseeing the work, ask questions, and better understand the scope and timeline of the demolition.

Thank you, as always, for your patience and cooperation during this busy season. I look forward to seeing you around the Island!



Important Event

Wednesday, April 15th

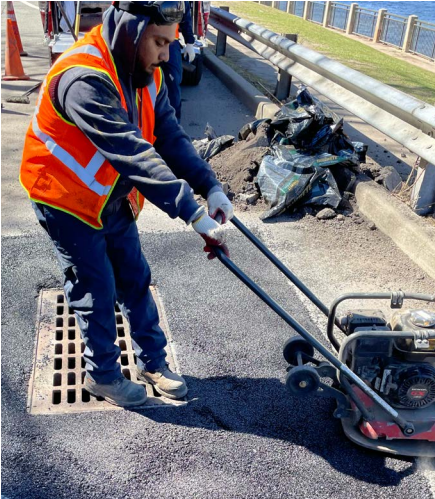
The Steam Plant Demolition Townhall will be held on **Wednesday, April 15 from 6:00-7:30 PM at Good Shepherd Chapel, located at 543 Main Street.**

If you'd like to submit questions in advance for the Q&A, please email them to Rldemolition@hpd.nyc.gov with the subject line "Steam Plant Townhall".

Employee Spotlight



Employee Spotlight



Minham Cader

Handyman, RIOC Maintenance

1. Can you tell us a bit about your background?

I was born in Sri Lanka and have been living in New York since 2000, which has given me a unique perspective on different communities and environments. I've built a strong background in maintenance through hands-on experience in repairs, inspections, and keeping facilities running smoothly. I take pride in being detail-oriented and reliable, always making sure issues are addressed quickly and correctly, and my work has helped me develop strong problem-solving skills across a wide variety of tasks. Joining RIOC has been a great opportunity to keep growing professionally while contributing to a community where I can see the direct impact of my efforts every day. Being part of a team that helps maintain a safe and welcoming environment makes the work even more rewarding. Overall, my background and experience have prepared me to handle the challenges of keeping the island in top condition.

2. What brought you to RIOC?

At the time, I was looking for a new opportunity and RIOC felt like a great fit for my skills and experience — a place where I could work hands-on, serve the community, and grow professionally. I was drawn to being part of a team that takes pride in its work and makes a real impact. Since joining, the variety of tasks and the satisfaction of seeing results every day has made it genuinely rewarding to know the island stays safe and welcoming because of our efforts. Working at RIOC has been rewarding because I can help ensure the island remains a safe and welcoming place for everyone.

3. Maintenance does a lot around the island. No one day may be typical, but can you tell us about what you might need to handle during an average workday?

Maintenance on Roosevelt Island is always varied, so no two days are ever the same. We typically start with routine inspections of equipment, public areas, and infrastructure, then respond to service requests that might involve fixing broken equipment, addressing leaks, or repairing damaged facilities — right now, a big focus is repairing potholes to improve the experience for drivers and pedestrians. We also stay ahead of issues through preventative maintenance, though unexpected challenges like weather-related damage or urgent repairs still come up and require immediate attention. Ultimately, our goal is to keep the island running smoothly and provide a safe, welcoming environment for everyone.

4. What are the biggest challenges the island faces from a maintenance perspective?

One of the biggest challenges on

Roosevelt Island is dealing with the effects of weather, which can wear down roads, equipment, and public spaces. High-traffic areas also need constant attention to stay safe and functional for residents and visitors. Being an island adds logistical complexity when sourcing materials or handling larger repairs, and unexpected issues always come up no matter how well we plan. Despite these challenges, our maintenance team works together to get the job done, supporting one another and tackling problems efficiently. Whether it's urgent repairs or ongoing projects, teamwork makes even the toughest tasks manageable. Our dedication ensures the island remains safe, clean, and welcoming for everyone. It's rewarding to know that the work we do has a direct impact on the community every day.

5. Finally, what do you enjoy most about working on Roosevelt Island?

I'm fortunate to work alongside five skilled professionals who bring a wide range of experience and always support one another. Each team member contributes unique skills, which allows us to tackle every challenge as a team, and under the leadership of our director Mehdi Omrani, we work in a positive and motivating environment that makes every day enjoyable. Our teamwork makes even the toughest tasks easier, and it's satisfying to see the results of our combined efforts throughout the community. One of the best parts of the job is the scenery — Roosevelt Island is full of beautiful views, from the waterfront to the parks, and being outdoors while maintaining the island's spaces is both rewarding and energizing. It's gratifying to know that our work keeps the island safe and welcoming for residents and visitors, and overall I feel proud to contribute to the community and enjoy the beauty of the island every day.

Updates from RIOC

“When in Doubt, Leave it Out!” – Protect the AVAC System

The island’s AVAC system continues to face persistent challenges due to prohibited items being thrown into chutes. To help raise awareness about proper AVAC use, RIOC has put together some helpful guidelines for building management teams to share with residents:

AVAC Disposal Guidelines

Roosevelt Island uses an Automated Vacuum Collection (AVAC) System to transport garbage from residential buildings to the AVAC facility through underground transport pipes.

Residents place garbage in the trash chutes located on each floor of their building. Garbage must be securely tied inside bags that fit easily through the chute access door without resistance. During collection cycles, the system opens a pneumatic valve and uses air suction to pull garbage through the underground ducts to the AVAC plant. Because the system relies on airflow and narrow pipes, only small, bagged household trash should be placed in the AVAC chutes. Large, rigid, or heavy objects can clog the system, cause service disruptions, and require costly manual removal.



What Is “Household Trash”?

Household trash means everyday waste generated from normal daily living that can easily fit inside a tied garbage bag and move safely through the chute system.

Examples include:

- Food scraps and food waste (though consider composting!)
- Used paper towels and napkins
- Disposable plates, cups, and utensils
- Small non-recyclable packaging
- Vacuum dust and sweepings
- Diapers and sanitary products (securely bagged)

All garbage must be tied in a bag before being placed in the chute.

Items NOT Permitted in the AVAC System

The following materials **must not be placed in AVAC chutes:**

- Any large items
- Heavy plastics
- Metal
- Cardboard
- Wood
- Electronic items
- Carpeting/rugs
- Clothing/textiles
- Construction materials
- Kitchen supplies/cookware
- Toys
- Furniture
- Sewing machines
- Printers
- Books/documents
- Car bumpers/tires
- Bed frames/mattress
- Step stools
- Pipes/tools
- Sneakers/shoes
- Sporting equipment
- Umbrellas

These items should be disposed of through building recycling programs, bulk disposal procedures, or special waste collection services.

RIOC Relaunches Cherry Blossom “Petal Protectors” Initiative for 2026

Spring has arrived on Roosevelt Island, and our beloved cherry blossom trees are once again taking center stage. Following the success of last year’s program, RIOC has once again relaunched the Cherry Blossom Petal Protectors initiative to help preserve these iconic trees for current and future generations.

“Petal Protector” volunteers are greeting visitors, sharing tips for respectful behavior, and reminding guests to look, not touch: no climbing or picking the trees. They are also encouraging visitors to explore all of Roosevelt Island’s parks, landmarks, and public spaces, while supporting local businesses on the island.

Volunteers are stationed along the West and East Promenades, where foot traffic is highest, helping ensure the cherry blossom experience remains safe, welcoming, and beautiful for everyone.

The program runs through early May. If you’d like to participate, visit <https://calendly.com/petalprotectors>.

NEW YORK
STATE
OPPORTUNITY
Roosevelt Island
Operating Corporation

Protect the Cherry Blossoms!

Please help us preserve our beautiful Cherry Blossoms by:

- Staying on the sidewalks to protect tree roots
- Not picking the blossoms
- Not climbing or swinging on the tree branches

Thank you for protecting Roosevelt Island.

Scan the QR code here to explore the island’s shops, restaurants, landmarks and attractions!

Disclaimer: RIOC is not responsible for the content on any external third-party websites. Links to third-party websites are provided solely for convenience purposes and do not imply endorsement by RIOC.



PSD Hosts Opioid Prevention Training in Good Shepherd Chapel

On Thursday, March 19, the Public Safety Department hosted a special Opioid Prevention Training at Good Shepherd Chapel, featuring a presentation by Dr. Lulu Phillips of Weill Cornell Medical Center. Dr. Phillips discussed how to identify an opioid overdose and demonstrated how to administer Narcan, a life-saving medication designed to rapidly reverse an overdose. Attendees also received a free Narcan kit.



RIOC Announces Slate of Films for 2026 Summer Movie Series in Southpoint Park

The votes have been cast, the ballots counted, and now we are pleased to announce this year's slate of films that we'll be screening during our 2026 Summer Movie Series in Southpoint Park:

Zootopia 2 (PG), **Wicked: For Good** (PG), **Superman** (PG-13), and **How to Train Your Dragon** (PG live-action).

Each year, RIOC allows the community to vote for the four films they'd like to see from a curated list of some of the biggest blockbusters to come out in recent years. This year more than 500 total votes were cast, and we'd like to thank the community once again for your participation!

SUMMER MOVIE SERIES

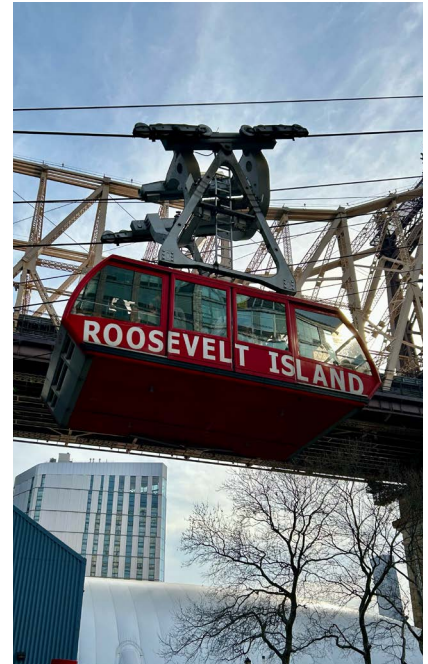


Federal Officials Procure \$250,000 Grant for Roosevelt Island Tram Modernization Project

Roosevelt Island’s federal Congressional delegation worked to secure a \$250,000 grant in this year’s Appropriations bill for the Roosevelt Island Tram Modernization Project, a capital initiative of the Roosevelt Island Operating Corporation (RIOC).

The proposed modernization includes upgrades to the cabins and improvements to system controls and structural elements. Safety-focused improvements include the replacement of cabin doors for both the north and south cabins and the installation of modern platform doors at both stations. These upgrades will help reduce risk of accidents, improve operational efficiency, and better accommodate passengers with disabilities.

“Thousands of Roosevelt Islanders rely on the Tram every day to get to work, school, medical appointments, and to stay connected to the rest of the city,” **said RIOC President and CEO B.J. Jones.** “This investment will help ensure the system remains safe, accessible, and reliable for decades to come. We are deeply grateful to Senator Gillibrand, Congressman Nadler, and our federal partners for recognizing the Tram’s importance and for their advocacy and support in securing this critical funding for our community.”



89 Trees Chopped for “Mulchfest”

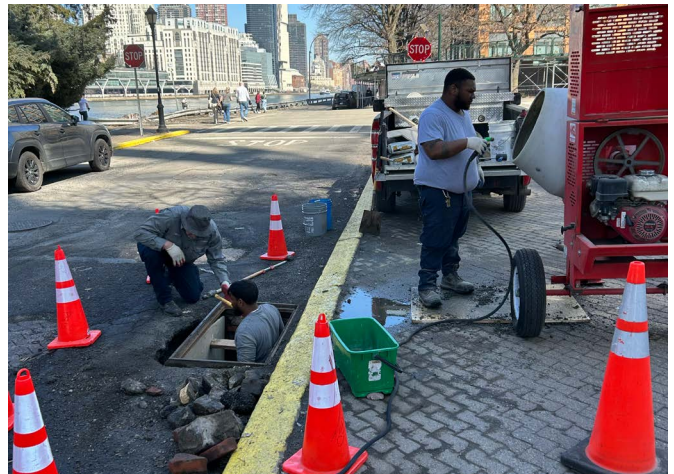
RIOC’s annual Holiday Tree Mulchfest returned once again this year, giving discarded Christmas trees a second life as mulch to help nourish and protect the island’s green spaces. This year’s effort took a bit longer than usual following significant snow removal operations, but RIOC Grounds got the job done. Thank you to the team for their hard work and continued care of our island’s landscape.



Park Repair Updates

The RIOC maintenance crew has been hard at work across the Island, getting things ready ahead of the warmer months. They recently replaced the iron doors at Al Lewis Playground and repaired the wooden retaining wall inside Blackwell Park. With the temperature increasing, they also tackled repairs to the storm drain outside Sportspark—counting it as a “park” in our book!

We thank the Maintenance crew for their dedication and hard work!



Report Potholes with “Operation Smooth Ride”

Our RIOC Maintenance team is out in full force tackling potholes across the Island, making every drive a little smoother. We’ve already done a major audit of the most egregious potholes on our roads to help guide our work.

Now we need you to join the mission.

Welcome to the Pothole Patrol!

See a pothole? Report it through our Brightly system so our team can track it and fix it fast. Every report helps us stay ahead and keep Roosevelt Island moving safely.

Submit your request here: qrco.de/Brightly



Red Bus Tracking Added to the Visit RI App

We’ve worked with our friends at the Citizen Project to add live Red Bus tracking to their “Visit RI” app, available now in the App Store. Thanks to Kaushal and his team and the RIOC IT department for working together to bring this integration to another app! Go to visitri.nyc to learn more.

RI ROOSEVELT ISLAND

News & Events

Island Map

Visitor Center

RED BUS

TRAM

SUBWAY

FERRY



visitri.nyc



Mark Your Calendars for RIOC's 2026 Islandwide Events!

The 2026 Roosevelt Island events calendar is here, and it's going to be another fun-filled year! See you in June for Roosevelt Island Day!

Roosevelt Island Operating Corporation Presents 2026 UPCOMING EVENTS

Pride Flag Raising

June 1st

Roosevelt Island Day

June 6th
Rain: June 7th

Summer Movie Series

Rain: Aug 14th and 21st

July 17th
July 24th
July 31st
Aug 7th

**9/11 Remembrance
Ceremony**

Sept 11th

Fall For Arts Festival

Sept 19th
Rain: Sept 20th

**Halloween
Extravaganza & Parade**

Oct 24th
Rain: Oct 25th

**Holiday Tree Lighting
Ceremony**

Dec 4th

For more information, visit rioc.ny.gov.



Roosevelt Island
Operating Corporation

YC Highlights

YC Cooking: Partnership with "Allergic to Salad"



Black History Month Jazzy Jam Session



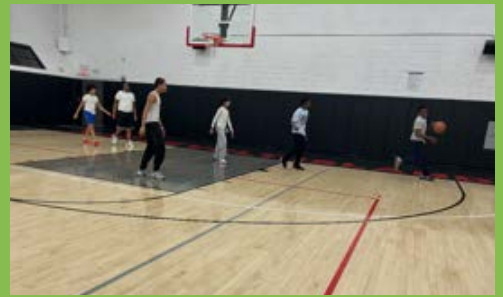
YC Zoo-to-You



YC Teen Night Cooking



YC Teen Basketball



National Women's History Month Event



Read Across America Day

